



Quality control of field data and 2D and 3D seismic data pre-processing

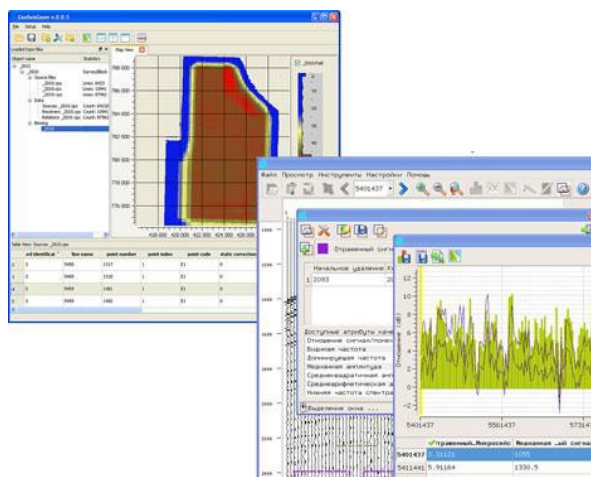
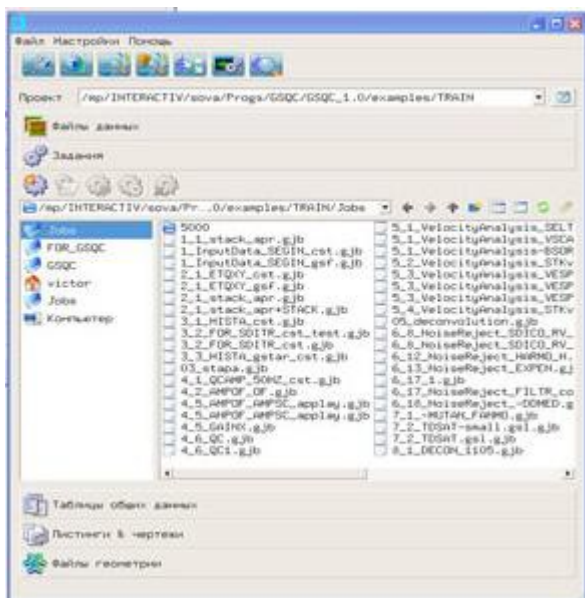
The program package is designed to control the seismic exploration works and estimate the seismic data quality

GeoSeisQC basic advantages

- Comprehensive set of tools to solve the tasks of quality control and field data express processing;
- Maximum reliability and simplicity of use. Friendly behavior towards the user, efficiency and reliability;
- Package scalability (a flexible system to manage the package modules);
- Multiplatform (productively works on Windows and Linux platforms).

GeoSeisQC software capabilities

- Primary data analysis
- Primary data processing
- Quality control
- Related programs



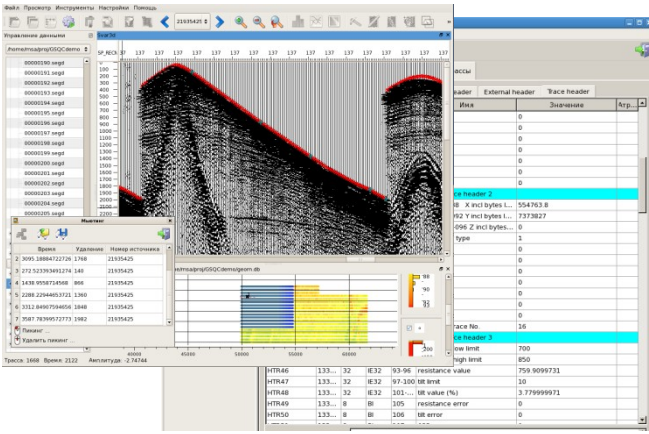
GEOLEADER
group of companies

www.geoleader.ru

Geoleader Ltd.
Russia, 117 292, Moscow,
Office 259, 16/2 Dm. Ulyanova str.
Tel.: +7 (495) 982 36 31
e-mail: info@geoleader.ru

Geoleader Ltd. (affiliate)
Russia, 625051, Tyumen
43 a, Permyakova str.,
Tel.: +7 (3452) 31 56 07
e-mail: info@geoleader.ru

Preliminary data analysis



- Seismic format definition and data import (SEG-D, SEG-Y and other)

- Acquisition geometry loading and visualization (SPS, UKOAA, observer logs); DB formation of geometry and a priori static corrections, binning parameters selection, calculation of the median line, etc.

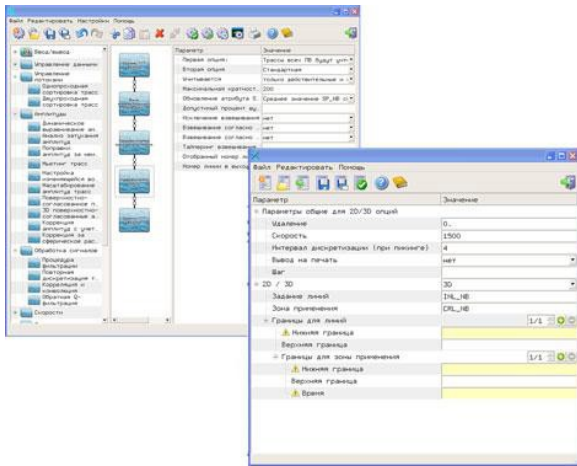
- Acquisition geometry application to 2D and 3D seismic data

- Visualization, selection of a priori velocity law, muting, filter parameters, attributes calculation, etc.

- Mathematical operations on trace samples and headers;

Data pre-processing

The software system includes interactive applications and more than 50 batch modules performing various operations with seismic data:



- Various types of stationary and non-stationary frequency filtering, AGC, deconvolution, muting, editing, etc.;
- Frequency-dependent noise attenuation;

- Velocity analysis, calculation and application of moveout, static, amplitude corrections, amplitude equalization;

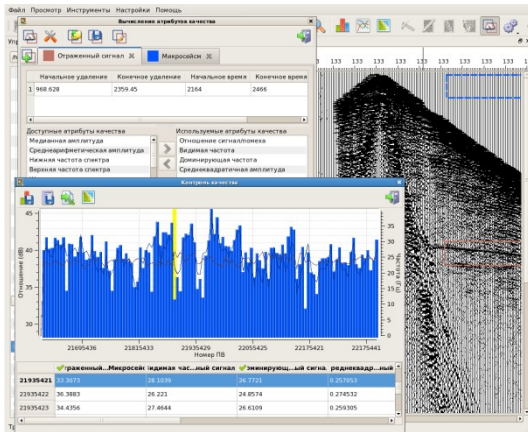
- Stacking operation (including preserved amplitudes);

- Calculation of seismic records attributes;

- Automatic noise attenuation and estimation of the seismic data quality;

- Data flow control, selection and sorting traces

Quality control



- Efficient quality control tools.
- Determination of the signal-to-noise with ratio tables and plots, and mapping

- Quality control by frequencies and amplitudes
- Calculation of the signal (noise) average levels, signal/noise ratio and other parameters in defined time/offset (channel) windows

